



DONG-A PRECISION IND.CO.

Water Treatment

Power Plant Facility

Machine Work

Industrial Machinery

Shipbuilding Equipment and Material

DONG-A PRECISION IND. CO

Business Introduction



CONTENTS

Company Overview.....	3~5p	Major Performance.....	15~32p
History of Company.....	6p	Primary Performance.....	33~34p
Organization	7p	Certificate	35p
Main Facilities	8p	Location of Company.....	36p
Products	10~14p		



1. Company overview – (1) Present

Title	➤ DONG-A PRECISION IND. CO.	Current factory	➤ Area: 8,252㎡ ➤ Manufacturing Facility: 5,610㎡ ➤ Other Facilities: 800㎡
CEO	➤ Byeong Hwa Yoon		
Address	➤ 24 Hwajeonsandan 5-ro 38beon-gil, Gangseo-gu, Busan, the Republic of Korea	Intellectual property right	➤ Patent ▶▶ 4 Screens, 4 Valves, 2 Sluices (total 10) ➤ Excelent Product Certificate ▶▶ Screen 1EA (rotary screen with bending prevent device of rake)
Website	➤ www.donga1973.co.kr		
Establishment	➤ 1st December 1973	Subsidiary company	➤ DONG-A INDUSTRIAL MACHINERY CO., LTD (Capital : 500million Won, located in Gimhae)

Business

Business Type

- **Manufacturing** : Industrial Machinery
- **Constructing** :
 - Mechanical work
 - Water supply and drainage facility
 - Steel structure work
 - Steel frames installation
 - Metal construction · Window & Door Work

Products

- **Water treatment** : Sluice, Valve, Hoist, Screen, etc
- **power plant facility** : LP Inner Casing, LP Outer Casing, Stator Frame, etc.
- **Shipbuilding equipment and material** :
Mast, Hatch Cover Fittings, Crane,
Deck Machinery, etc
- **Industrial machinery** : Crane, Plant Facility,
Steelwork Facility, etc.
- **Machine work** : Engine Crank Throw
Machining, etc.

Parts(ISO 9001, 2015)

- Design and manufacture of valves for water pipes, water gates winch & water gates, water treatment equipment, industrial machinery, ship's engine parts and turbine generator engine parts
- Manufacture of steel structure and steel outfittings for ships, marine and plant

1. Company overview – (2) Introduction of company



■ (2) Introduction of company

Reliable company taking corporate social responsibility

We have contributed to develop shipbuilding equipment, industrial machine and power plant facility since we started manufacturing water treatment equipment, such as sluice, valve, dust separator, and etc. in 1973.

Specialized in water treatment equipment, it has high technology and know-how to design, manufacture, and construct all facilities relating to dam, pumping/drainage system, and waste water disposal. In the power plant facility sector for 2014–2016, we achieved excellent cooperative enterprise of high quality and perfect completion, had fulfilled over 20 projects of thermal power plant and nuclear power plant(LP CASING) since 2012.

Based on our experience and manufacturing technology, we provide the best quality and make it with various cranes and machining equipment within a given period. We consistently endeavor to develop technology and research on many products and apply for a patent on a product, register, and commercialize it in annum.

Through continuous attempt and innovation, we promise all our customers that we will be a reliable company who takes a social responsibility. Thank you.

CEO, Byeong Hwa Yoon

1. Company overview – (3) Mission

■ (3) Mission

Trust


: Mutual trust between employees active communication and cooperative relationship

Confidence


: Appropriate permission and grant responsibility voluntary and creative team members

Credibility

: The best quality, accurate payment and perfection, exhaustive after-service



Trust



Confidence



Credibility



... DONGA is a company who contributes not only to enrichment of all employees' life and but also to national and social development by creating profit through customers' satisfaction.

2. History of Company

1970s

1973. 12. 1 Establishment of Dong-A Precision IND.CO. (location : Hakjang-dong, Sasang-gu, Busan)

1980s

1983. 3 Acquisition of Governmental License for the business of construction (Machine Facilities Construction Work)

1983. 3 Acquisition of Governmental License for the business of construction (Metal Structure Window & Door Work)

1990s

1992. 4 Moved for factory expansion (location : Dadae-dong, Saha-gu, Busan)

1992. 12 Registered as a qualified vendor to Hanjin Heavy Industries & Construction CO.LTD

1993. 8 Acquisition of KS (Korean Industrial Standards) Mark Certificate (butterfly valve for water pipe)

1994. 1 Acquisition of KS (Korean Industrial Standards) Mark Certificate (control valve for water pipe)

1994. 3 Registered as a qualified vendor to Hyundai Precision CO.LTD.

1994. 7 Registered as a qualified vendor to MITSUBISHI Heavy Industries, LTD. (NAGASAKI, JAPAN)

1995. 3 Registered as a qualified vendor to Daewoo Engineering & Construction CO.LTD.

1996. 5 Registered as a qualified vendor to NITCHITSU CO.LTD. (MACHINERY DIVISION)

1997. 2 Designated as Vison 21 lead corporation (Busan Small & Medium Business Administration)

1997. 5 Designated as Advanced Technology Corporation (The Small and Medium Business Administration)

1998. 11 Acquisition of International Standard ISO9001 Certification (ABS, Q.E.I)

1998. 11 Awarded a million USD export prize (Award a Presidential citation)

1998. 11 Award a Presidential citation (National industry development contribution by Trade Promotion)

1999. 4 Acquisition of KT Domestic New Technology (water hammer reduction slope disk check valve)

1999. 11 Registered as Venture Enterprise (The Small and Medium Business Administration)

2000s

2000. 7 Registered as a qualified vendor to Samsung Engineering

2004. 8 Registered as a qualified vendor to Doosan Heavy Industry

2006. 11

Acquisition of Technology Renovation Small and Medium-sized Businesses (INNO-BIZ) Confirmation (The Small and Medium Business Administration)

2007. 1

Acquisition of Governmental License for the business of construction (Water and Sewage Facilities Works)

2007. 4

Acquisition of Certificate for the performance (Item : Eccentricity Unresisted Valve) (The small and Medium Business Administration)

2007. 7

Registered as The Korea Water Resources Corporation (K-Water) water work equipment supplier (general item for water pipe, metal, double BFV 2800mm and less, Control valve 1000mm and less)

2007. 11

Acquisition of Governmental Certification for the business of construction (Steel construction)

2008. 7

Acquisition of Governmental License for the business of construction (Steel works installation)

2008. 12

Acquisition of Environment Management System Certificate (KS A ISO 14001:2004)

2010s

2010. 9

Acquisition of Affiliated Laboratory Certificate (Korea Industrial Technology Promotion Association)

2010. 12

construction industry license (metal licensing industry) acquisition

2012. 2

Moved for factory expansion (Present)

2012. 9

Acquisition of Hygiene Safety Standard (KC) Certificate (Butterfly Valves for water pipe, control valve for water pipe)

2014. 10

Acquisition of Suitability Certificate for water pipe (Butterfly Valves for water pipe, Control valve for water pipe, Bellows joint)

2014. 10

Acquisition of Hygiene Safety Standard (KC) Certificate (Bellows joint, expansion joint, swing check valve)

2017. 3

Selection as Doosan Heavy Industry excellent cooperation business (Four years in a row)

2017. 7

Registered as the repair & maintenance of 6 company of KEPCO's Subsidiaries (24 items)

2017. 12

Procurement Leading Product Certification

3. Organization



4. Main Facilities

Area : 8,252.4m² (2,500square meter)



Head Office & Affiliated Laboratory



Welfare Center



Assembly Shop



W25.8m×L75m×H20m
1,575m² (477square meter)
50/30, 20/5ton Crane

Machining Shop



W25.8m×L75m×H20m
1,890m² (572square meter)
100/20, 30/5ton Crane

Welding and Fabrication Shop



W25.8m×L75m×H20m
1,935m² (585square meter)
100/40, 20/5ton Crane

5. Main Facilities

Large Machine Tool	Manufacturing Company	Figure	Amount
CNC Boring Machine	Daewoo Heavy Industries	φ130 x 2000 (X) x 1600 (Y) x 900(Z)	1
CNC Boring Machine	SHIBAURA(JAPAN)	φ160 x 12000 (X) x 4000 (Y) x 900(Z)	1
Boring Machine	GIDDINGS & LEWIS	φ180 x 8400 (X) x 4000 (Y) x 1500(Z)	1
CNC Turning Machine	QIQIHAR(CHINA)	φ7400 x 4000H	1
CNC Turning Machine	NILSE(USA)	φ4000 x 3050H	1
Plano Miller	KUBOTA(JAPAN)	W2300 x 10000L x 2000H	1



6. Products – (1) Water Treatment Equipment Production & Installation (Sluice & Hoist, Valves)

(1) Water Treatment Equipment Production & Installation



Sluice & Hoist



Roller Gate



Radial Gate



Sliding Gate



Intake Tower Sluice



Motor Hoist



Drum Type Hoist

Valves



Butterfly Valves



Ball Valves



Flap Valves



Gate Valves



Check Valves



Dual Valves

6. Products – (1) Water Treatment Equipment Production & Installation (Screen, etc.)

11

(1) Water Treatment Equipment Production & Installation



Screen



Rotary Screen



Hydraulic Screen



Screen



Travelling Screen

Product Name	rotary screen with bending prevent device of rake
Feature	equipment reinforcement for strain relief of rake
Application Technology	patent : 10-1363765
Standard	width : 2,000mm~6,990mm / height : 2,000mm~8,000mm
Model	DA-BPD-2000,3000,4000,5000,6000 ets (waterway width standard)



Excelent Product – Rotary Screen

Other Water Treatment Equipment



Expansion Joint



Sludge Collector



Conveyor



Grit Removers



Deodorizer



Pump

6. Products – (2) Power Plant Facilities Production

■ (2) Power Plant Facilities Production

LP Inner Casing Upper/Lower



LP Inner Casing Upper



LP Inner Casing Lower

LP Outer Casing Hood Upper/Lower



LP Hood Upper



LP Hood Lower

LP Minor



Steam Guide



Middle Standard Lower

Stator Frame



Generator Stator Frame



Generator Stator Frame

6. Products – (3) Shipbuilding Equipment Production (4) Industrial Machine Production

13

(3) Shipbuilding Equipment Production

Mast



Mast



Mast

Hatch Cover Fittings & Deck Machinery



Hatch Cover Fittings



Deck Machinery

Ship's Crane



Crane



Crane

(4) Industrial Machine Production

Crane



Crane

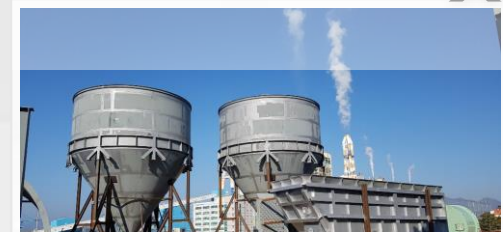


Jib Crane

Plant Facilities



Plant Chemistry Facilities



Plant Tank



Coal Grinder Component



Rolling Facilities



6. Products – (5) Machine Work(Machining)

(5) Machine Work(Machining)

Water Treatment Equipment Work



Large Sluice



Large Valve

Power Plant Facilities Work



LP Casing



HP Casing

Shipbuilding Equipment Work



Rudder Horn



Engine Crank Throw

Other Work



Coil Box



Casing

7. Major Performance(1)

15

Project Name

- Hanlim drain facility flood damage rehabilitation
Production & Installation of Pumps, Valves and Screens

Client

- Korea Rural Corporation

Item Name

- Motor Valve(φ2000), Flange(φ2000)
Each twelve Expansion Joints Production & Installation (φ2000×2140)
- Two rotary screens Production & Installation
- Vertical mixed Flow Pump, Sluice, Motor, Cane, Installation work

Completion

- 2004



7. Major Performance(2)

Project Name

➤ [Madong Area agricultural water development](#)
Production & installation of radial gate

Item Name

➤ Nine tidal Gates(W10000 × H5300), etc.

Client

➤ Korea Rural Corporation–Gum Gwang Corporation

Completion

➤ 2009



7. Major Performance(3)

17

Project Name

- Save Nakdong river work 30Area(Gumi Area) small Hydro Power Plant Production & Installation of Sluices
- Save Nakdong river work 30Area(Gumi Area) Production & Installation work of Screens

Client

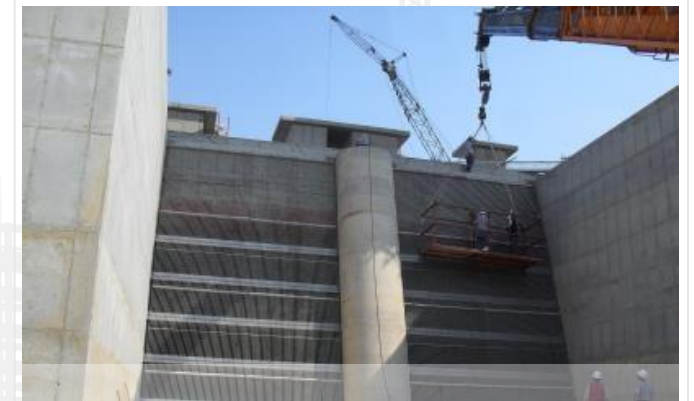
- The Korea Water Resources Corporation(K-Water)
- POSCO E&C

Item Name

- Two entry Sluices(W6.0m × H4.5m)
- Two exit Sluices(W4.8m × H3.0m)
- Two Screens (W6.0m × H11.1m), etc.

Completion

- 2011



7. Major Performance(4)

Project Name

- Save Nakdong river work 33Area(Sangju Area) small hydro Sluice Production & Installation work
- Save Nakdong river work 33Area(Sangju Area) Screen Production & Installation work

Client

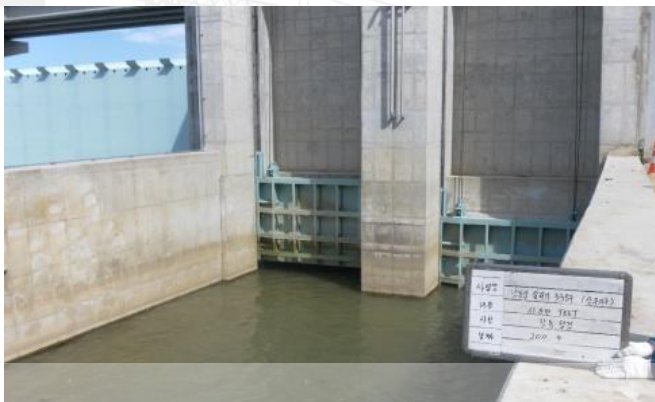
- The Korea Water Resources Corporation(K-Water)
- HYUNDAI Development Company

Item Name

- Two inflow Sluices(W4.7m × H5.0m)
- Two watertight Gates(W4.7m × H3.2m)
- Two automatic Screens(W4.7m × H16.4m)
- Two Belt Conveyors , etc.

Completion

- 2012



7. Major Performance(5)

19

Project
Name

➤ UAE Barakah Nuclear Power Plant #1

Item Name

➤ LP Inner Casing Upper Welding and Fabrication

Client

➤ Doosan Heavy Industry

Completion

➤ 2013



7. Major Performance(6)

Project
Name

➤ Yeosu Turbine Generator

Item Name

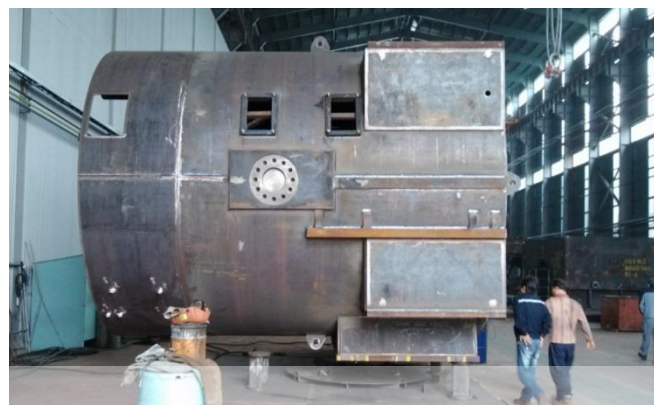
➤ 1 Unit(1 STATOR FRAME) Welding and Fabrication

Client

➤ Doosan Heavy Industry

Completion

➤ 2013



7. Major Performance(7)

21

Project
Name

➤ Shin-Boryeong unit 1,2 Turbine Generator

ITEM NAME

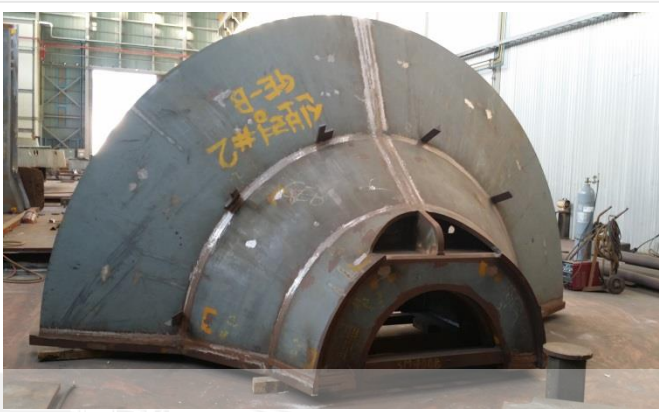
➤ unit 1,2 LP Outer Casing (Hood Lower)
Welding and Fabrication

Client

➤ Doosan Heavy Industry

Completion

➤ 2013



7. Major Performance(8)

Project Name

➤ Dalchang Area irrigation facilities development
Production & Installation of Radial Gates

ITEM NAME

➤ four emergency Radial Gates(W6500m × H9300) , etc.

Client

➤ Korea Rural Corporation-Samhwa Construction CO. LTD.

Completion

➤ 2014



7. Major Performance(9)

23

Project Name

➤ GE A10 42" LP Casing #1~#10

Item Name

➤ LP Exhaust Hood & Minor Welding and Fabrication

Client

➤ Doosan Heavy Industry

Completion

➤ 2014



7. Major Performance(10)

Project Name

- [Make Gwangju Lake bank higher](#)
Production & Installation of radial gates

Item Name

- Four emergency Radial Gates (W7500m × H7200), etc.

Client

- Korea Rural Corporation–Hung Han Construction CO., LTD

Completion

- 2015



7. Major Performance(11)

25

Project Name

➤ [PATRIND Hydro Power / Pakistan](#)
Production of radial gate anchorages

Item Name

➤ Radial Gate Anchorage 3SET, etc.

Client

➤ Daewoo E&C

Completion

➤ 2015



7. Major Performance(12)

Project Name

- Su-young River downstream flooding improvement & restoration work
Production & installation of sluices

Client

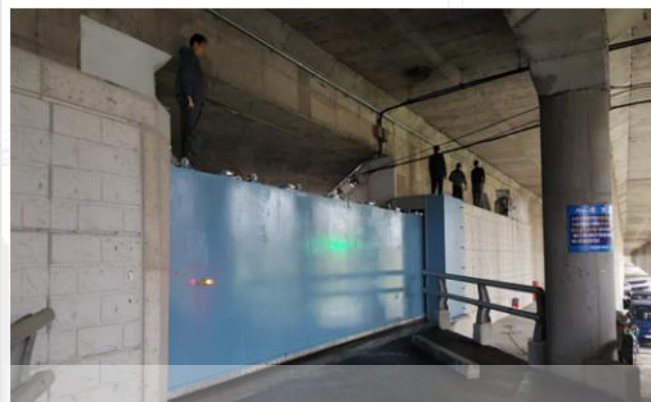
- Busan metropolitan city-Dae sung robust CO.LTD.

Item Name

- M-1 One Electric Sliding Sluice (W15900 × H3900)
- M-2 One Electric Sliding Sluice (W10000 × H2400)
- M-3 One Electric Sliding Sluice (W3200 × H2100)
- M-4 Two Electric Rotary Sluices (W6100 × H3000)

Completion

- 2015



7. Major Performance(13)

27

Project Name

➤ SONG HAU 1 STG unit 1,2

Item Name

➤ LP Exhaust Hood Upper, LP Inner Casing
Welding and Fabrication

Client

➤ Doosan Heavy Industry

Completion

➤ 2016



7. Major Performance(14)

Project
Name

➤ Shin Seocheon-1 Turbine Generator

Item Name

➤ LP Hood Lower, Minor Tining Production

Client

➤ Doosan Heavy Industry

Completion

➤ 2016



7. Major Performance(15)

29

Project Name

➤ Pusan Newport Company(PNC) Lashing Cage
Production & Installation

Item Name

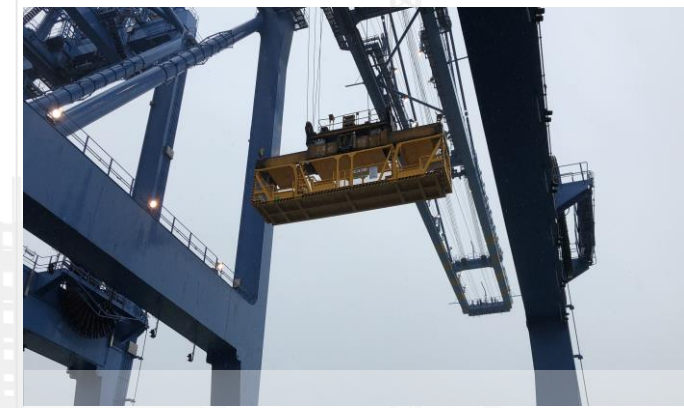
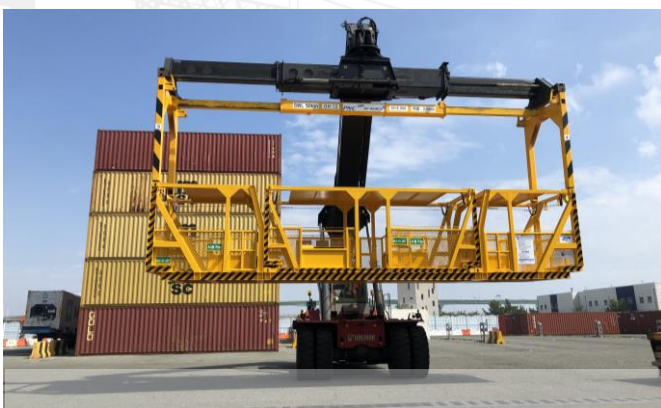
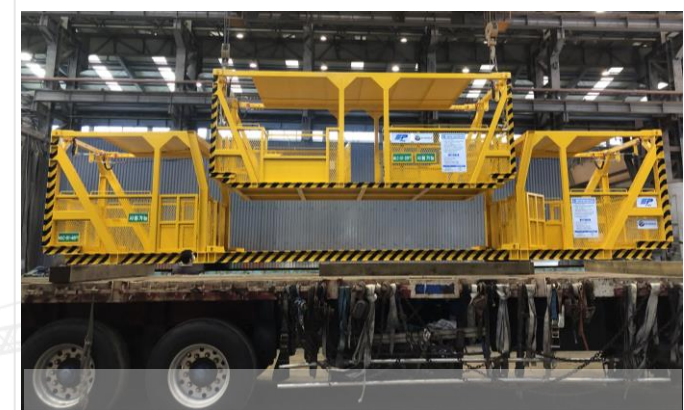
➤ Multi-type Lashing Cage 3EA

Client

➤ PNC Co., Ltd

Completion

➤ 2019



7. Major Performance(16)

Project Name

Goseong Hai Thermal Power Plant unit 1&2
➤ Small Hydro
Production & Installation of Sluices and Bar Screens

ITEM NAME

- Two Entry Sluices(W6700 × H5400)
- Two Exit Sluices(W4800 × H3500)
- Two Bar Screens(W6700 × H7200)

Client

➤ DAEYANG HYDRO Co., Ltd

Completion

➤ 2020



7. Major Performance(17)

31

Project Name

Goseong Hai Thermal Power Plant unit 1&2
Ash handling & Refinery System

Production of Tanks, Hoppers, Silos, etc.

ITEM NAME

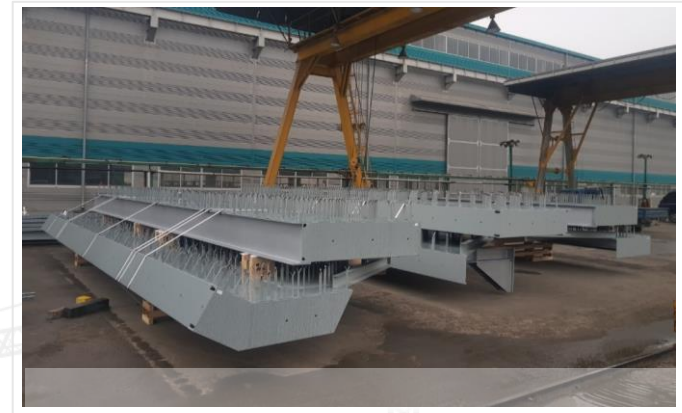
Bottom Ash System, Fly Ash system,
Ash Silo System, Tanks, etc

Client

➤ DongYang P&F

Completion

➤ 2020



7. Major Performance(18)

Project Name

➤ Tae'an Units 9 and 10, Sluice Gate and Bar Screen production

ITEM NAME

- Inflow Sluice Gate(W7600 × H6820) 2EA
- Spill Inflow Sluice Gate(W7400 × H5440) 2EA
- Bar Screen(W7600 × H8500) 2EA

Client


➤ DAEYANG HYDRO Co., Ltd

Completion

➤ 2020



8. Primary Performance(1)

Products	Client	Product(Project) Name	Supply (Completion)
 <p>Water Treatment Equipmant</p>	Hung Han Construction CO., LTD	Munsan Sewage Treatment Plant/sediments hoist etc., production & installation)	1998
	Busan Construction Headquarter	Noksna Sewage Treatment Plant Water Treatment Equipment Production & Installation (Sediments hoist, Sludge Collector, automatic screen, Eight cranes)	1998
	Daewoo E&C	Gulpocheon Sewage Treatment work/Valves Production & Installation	2000
	Korea Rural Corporation	Hanlim drain facility twelve vertical mixed flow pumps installation, twelve Butterfly Valves electric production & installation	2003
		Sungju Dam flooded port rehabilitation Sluice production & installation work	2005
		Geumgang II Area valve production purchase(electric Ball Valves etc.,)	2006
		Paldang Dam tunnel gate control valve change work(Butterfly Valves etc.,)	2006
		Yeongsan River 4 Area Two power Butterfly Valves production supply	2007
		Madong Area Sluice, Hoist design·production·installation	2009
	Busan Construction and Management Administration	30 Area Gumi Reservoir small hydro power plant Sluice dust separator production & installation work inflow Sluice	2011
		18 Area Haman Reservoir small hydro power plant Sluice, hoist production & installation work	2011
	Hyundai Steel Industry CO. LTD.	Soyang River dam selected intake facilities Sluice & hoist production purchase	2012
	Busan Construction and Management Administration	33 Area Sangju Reservoir small hydro power plant Sluice production & installation work inflow Sluice	2012
		33 Area Sangju Reservoir small hydro power plant dust separator production & installation work	2012
	Korea Rural Corporation	Make Jukjeon Area bank higher work Intake Tower Sluice production & installation work	2012
		Dalchang Area irrigation facilities renovation emergency radial gate etc., production & installation work	2014
	Seoul Waterworks Headquarter	Gangbuk water intake travelling screen production & installation	2014
	Korea Rural Corporation	Make Goangju Lake bank higher work civil engineering spillway Sluice work	2015
	Busan Construction Headquarter	Suyoung River downstream flooding improvement work(sliding Sluice)	2015
	Daewoo E&C	Radial Gate Anchorage (Underflow 2set, Bypass 1 set) (site name: PATRIND HYDRO POWER/Pakistan)	2015
	Busan City Construction Headquarters	Bucheon City flood prevention project mechanical construction(movable weir Production & Installation)	2016
	Busan City Construction Headquarters	Haeundae Sewage Pump Station dust precipitator Demolition & Installation	2019
	Daeyang Hydro	Taeon Units 9 and 10, Sluice Gate and Bar Screen production	2020
	Daeyang Hydro	Goseong Hai Thermal Power Plant unit 1, 2 small hydro Sluices and Bar screens Production & installation	2020

8. Primary Performance(2)

Products	Client	Product(Project) Name	Supply (Completion)
Power Plant Facilities	Doosan Heavy Industry	MONGDUONG #1/2 LP Hood Welding and Fabrication	2012
		GE 33.5" LP Casing Welding and Fabrication	2013
		BARAKAH #1 TBN Inner Casing Upper Welding and Fabrication batch	2013
		Yeosu thermal #1 STATOR FRAME Welding and Fabrication	2013
		Shin-Boryeong #1/2 LP Hood Lower Welding and Fabrication	2014
		GE 48" LP Hood Lower Welding and Fabrication	2015
		GE 42" SINGLE FLOW PJT 용 LP Casing Welding and Fabrication	2015
		GE D 13 40" #1, 2 LP Hood, Minor Welding and Fabrication	2015
		Songhau # 1, 2 Inner Casing /Hood Upper Production	2016
		Singori # 5/6 HP/LP Minor Welding and Fabrication	2017
		Porce Power # 1/2 LP Hood, Minor Welding and Fabrication	2018
		INLET MANIFOLD (SM400B) Welding and Fabrication	2019
	DAEYANG-HYDRO Co., Ltd	Goseong-Hai Thermal Power Plant unit 1&2 Small Hydro Production & Installation of Sluices and Bar Screens	2020
	DAEYANG-HYDRO Co., Ltd	Taeon Units 9 and 10, Sluice Gate and Bar Screen production	2020
	DongYang P&F	Goseong-Hai Thermal Power Plant unit 1&2 Ash handling & Refinery System	2020
Shipbuilding equipment	Hanjin Heavy Industry	FAB. FOR EMERGENCY LIFTING DEVICE	1993
		ELECTRIC HOUSE FOR STACKER/RECLAIMER	1993
		RUDDER STOCK KEY (N615/616)	1993
		BOGIE FRAME, MACHINING FOR TRUCK FRAME (PASSAGER COCHES)	1994
	Geoje Shipbuilding	CARGO HATCH W/MANHOLE	1994
	Hanjin Heavy Industry	PUMP TOWER BASE SUPPORT/PIPE SUPPORT/RADAR MAST(N-016선(LNG CARRIER))	1994
		TANKS FOR CLEANING SYSTEM SLOP TANK/CLEAN TANK	1994
	SamSung H I	HOSE HANDLING CRANE (HN1111/1110/1122)	1994
	Shina Shipbuilding	SAT. COM. ANTENNA POST (N-024/31)	1995
	Halla Heavy Industry	DRUM SCREEN SCREW PRESS	1995
	Hanjin Heavy Industry	HATCH COVER FITTINGS	1995~2002



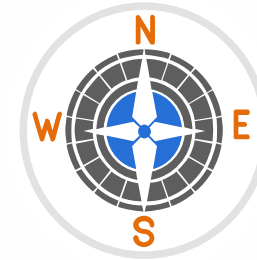
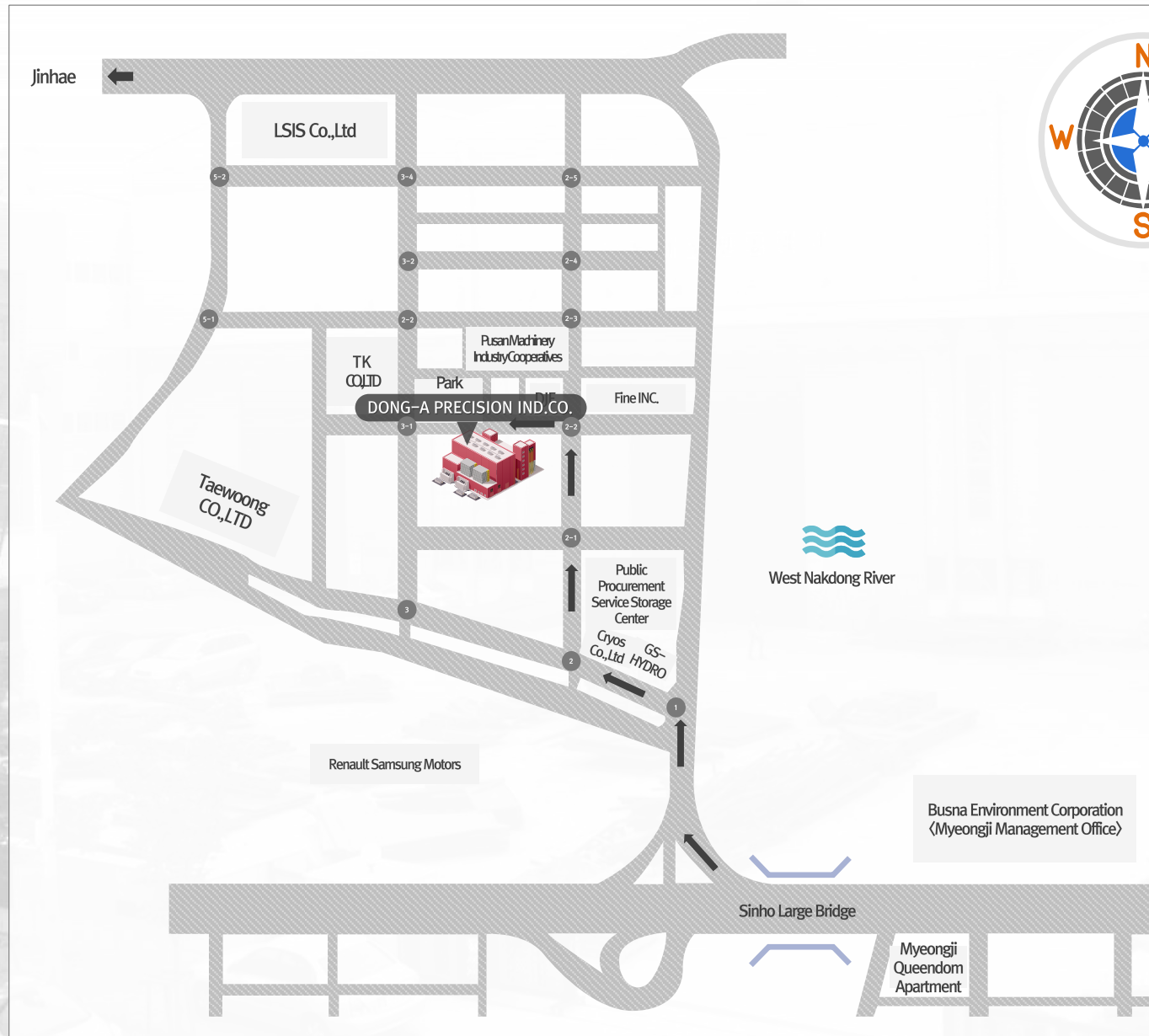
Products	Client	Product(Project) Name	Supply (Completion)
Industrial Machinery (domestic)	PNC Co., Ltd	Pusan Newport Company(PNC) Lashing Cage Production & Installation	2020
	Yeosu Gwangyang Port	Lashing Cage Production & Installation	2020
	Busan Port	Lashing Cage Production & Installation	2020
Industrial Machinery (exportation)	Misubishi H I	COAL GATE FOR PULVERIZER	1994
		SPILLAGE HOPPER & COAL CHUTE FOR PULVERIZER	1995
		OUTRIGGER / LOCKING DEVICE & STROKE SENSOR	1996
	Nitchitsu CO., LTD.	LADLE TURRET	1996
	Misubishi H I	N. P. C P/J (OUTLET VALVE)	1997
		PARTS OF MILL (APC-P/J)	1998
	Nitchitsu CO., LTD.	NACELLE (I, II)	1998
	Misubishi H I	HOPPER & CHUTE AND OUTLET VALVE ASS'Y (NN-P/J)	1998
		CENTER FEED PIPE (SKK-P/J)	2000
		R/C DRIVING DEVICE & C/ CHUTE (RO-P/J)	2001
Machine Work	Hanjin Heavy Industry Daewoo Heavy Industry	RUDDER HORN CASTING / STEM BOSS / V-STRUT	2000~2001
	Doosan Heavy Industry	Doosan engine CRANK THROW machining unit price contract	2005~2020

9. All sorts of Registration & Certificate

Division	Content	Certification
Construction Industry Registration	Machine facilities construction work	Busan metropolitan city Saha-gu office
	Water and Sewage Facilities Works	
	Steel construction	
	Steel works installation	
	Metal Structure·Window&Door Work	
ISO Certificate	ISO 9001:2015 certificate	ABS Quality Evaluation,inc.
	ISO 14001:2004 certificate	Korean Foundation of Quality
KS Product Certificate	Butterfly valve for water pipe	Korean Standards Association
	Control valve for water pipe	
For water pipe suitability certificate	Butterfly valve for water pipe	Korean Water and Wastewater Work Association
	Control valve for water pipe	
	Bellows joint	
Hygiene safety standard certificate	Butterfly valve for water pipe	Korean Water and Wastewater Work Association
	Bellows joint	
	Expansion joint	
	Swing check valve for water pipe	
Reliability Certificate	Butterfly valve / for water pipe(Model : 300A)	Korea Institute of Machinery & Materials
	Gate valve / for water pipe(Model : 200A)	
Water Pipe Equipment Supplier Registration	Butterfly valve for water pipe 2800mm and less Double sealing butterfly valve 2800mm and less Control valve for water pipe 1500mm and less	The Korea Water Resources Corporation(K-Water)

Division	Content	Certification
Patent	Slope disk(type) check valve	Korean Intellectual Property Office(KIOP)
	Eccentric nonresistance valve	
	Ball valve	
	Main screen of screen(1)	
	Main screen of screen(2)	
	Bending prevent device of rake	
	Front screen for concomitant pass prevention of screen	
	Underwater pump of gate of water way	
Design Registration	Watertight structure of Sluice for water pipe	Korean Intellectual Property Office(KIOP)
	See through disk valve	
Excellent Product Certificate	Disk for double block butterfly valve	Korean Intellectual Property Office(KIOP)
ETC	Rotary screen with bending prevent device of rake	Public Procurement Service
	Presidential citation	Ministry of Government Administration and Home Affairs
	Affiliated laboratory certificate	Korea Industrial Technology Promotion Association
	Technology renovation small&medium-sized businesses confirmation(INNO-BIZ)	The Small and Medium Business Administration (SMBA)
	Venture Enterprise confirmation	The Small and Medium Business Administration (SMBA)
	Doosan Heavy Industry excellent cooperation business certificate	Doosan Heavy Industry
ETC	Certification of the repair & maintenance of 6 company of KEPCO's Subsidiaries (24 item)	Korea Electric Power Corporation (KEPCO)

10. Location of Company



DONG-A PRECISION IND.CO.
Hwajeonsandan 5-ro 38beon-gil,
Gangseo-gu, Busan, the Republic of Korea

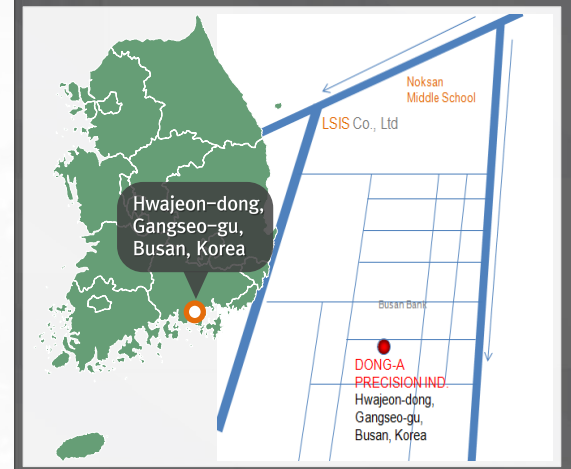
☎ TEL : (051)264-9451

📠 FAX : (051)264-9455

✉ E-mail : donga1973@hanmail.net

Right turn at end of a Sinho large bridge

- 1 Left turn at No.1 traffic light
- 2 Right turn at No.2 traffic light
- 2-2 Left turn at No.2-2 traffic light





DONG-A PRECISION IND.CO.